

# Costume Instructions for Junior Classes

## OPENED TIGHTS CAN NOT BE EXCHANGED OR RETURNED!

Before opening, check sizing chart. If you would prefer a different size, bring unopened package to the office for exchange.

### General Instructions

- SHOES MUST BE IN NEW CONDITION. Wash fairly new canvas shoes or purchase a new pair.
- COMPANY DANCERS MUST WEAR THE BLOCH BALLET SHOES.
- Label all parts of costume with your full name.
- Do not wear or play in costume prior to Dress Rehearsal or Performances
- Do not eat or drink in costume. Each student is responsible to keep costumes clean.
- Bring all parts of costume to Dress Rehearsals and Performances.
- No jewelry or nail polish.

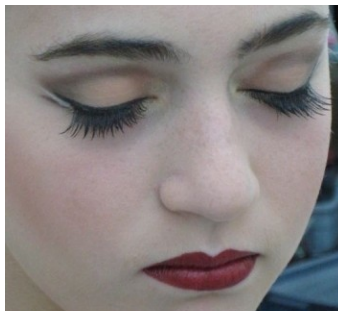
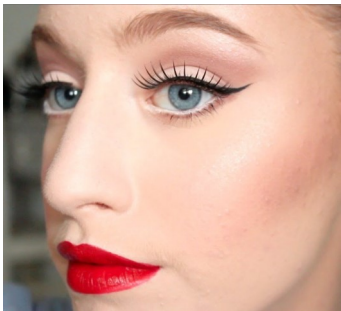
### Make Up Instructions

Makeup MUST be worn on stage to avoid looking washed out. Apply makeup similar to average everyday wear, only darker. For younger dancers, eyeliner is optional.

EYES: **Brown Eyeliner and Eyeshadows.** Black Mascara. Older dancers may wear false eyelashes.

SKIN: Powder matching skin tone. **Red or Pink Blush.** DO NOT use browns. They look black on stage.

LIPS: **RED** lipstick. NO browns.



## Class Details

CLASS	Super Hero Dolls /Dance Expressions (Tue 10:15 )
HAIR	Hair half up. See handout and example photo.
HAIRPIECE	Cape and cuffs
TIGHTS	None
SHOES	Black Tap shoes and no ballet shoes

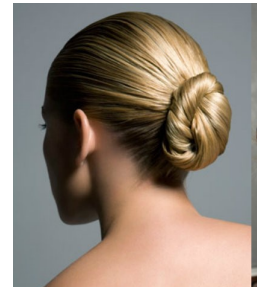
CLASS	Lamb Princesses/D Exp (M 3:15)
HAIR	Hair half up. See handout and example photo.
HAIRPIECE	Lambs: Ear headband Secure ALL HEADPIECES in at least 2 points. Use 2 bobby pins at each point crossing them in an 'X'.
TIGHTS	Pink (provided)
SHOES	Black tap shoes and pink ballet shoes.



### HAIR HALF UP

Front slicked and sprayed. Elastic band centered on crown of head.  
Back curled.

<i>CLASS</i>	<b>Clown Princesses / Dance Exp (Wed 4:15)</b>
<i>HAIR</i>	Low bun. See handout and example photo.
<i>HAIRPIECE</i>	Secure hat to hair ON RIGHT SIDE OF HEAD in at least 2 points. Use 2 bobby pins at each point crossing them in an 'X'. Collar.
<i>TIGHTS</i>	Pink (provided)
<i>SHOES</i>	Pink Ballet shoes and Black Tap Shoes



**LOW BUN**

No Part. Very slicked and sprayed. Elastic band centered at lower hairline. Bun created in the shape of a cinnamon bun, laying flat on head. No sock buns, please. **Hair net required** and placed around bun and secured.

<i>CLASS</i>	<b>City Princesses/Dance Exp (Tue 9:30)</b>
<i>HAIR</i>	Medium High bun. See handout and example photo.
<i>HAIRPIECE</i>	Flower on right side of head. Gloves. Secure ALL HEADPIECES in at least 2 points. Use 2 bobby pins at each point crossing them in an 'X'.
<i>TIGHTS</i>	Pink (provided)
<i>SHOES</i>	Black tap shoes and pink ballet shoes.



**MEDIUM HIGH BUN**

Very slicked and sprayed. Elastic band centered on crown of head. Bun created in the shape of a cinnamon bun, laying flat on head. No sock buns, please. Hair net placed around bun and secured.

<i>CLASS</i>	<b>City Princesses/Expressions Combo Thursday</b>
<i>HAIR</i>	Hair half up. See handout and example photo.
<i>HAIRPIECE</i>	City: Hat on right side Secure ALL HEADPIECES in at least 2 points. Use 2 bobby pins at each point crossing them in an 'X'.
<i>TIGHTS</i>	Pink (provided)
<i>SHOES</i>	Black tap shoes and pink ballet shoes.

<i>CLASS</i>	<b>Farmer Princesses /Combo Basics (Wed 6:30)</b>
<i>HAIR</i>	Part hair down the middle. Slick bangs back. 2 Low pigtails behind the ears. Lots of curls. See handout and example photo.
<i>HAIRPIECE</i>	Ribbon on each pigtail. Secure hat to hair ON RIGHT SIDE OF HEAD in at least 2 points. Use 2 bobby pins at each point crossing them in an 'X'.
<i>TIGHTS</i>	Pink (provided)
<i>SHOES</i>	Pink Ballet shoes and Black Tap Shoes



**2 LOW PIGTAILS**

Parted in the middle. Very slicked and sprayed. 2 elastic bands placed behind ears. Curl pigtails.

<i>CLASS</i>	<b>Glitterati &amp; American Girl Dolls /Intro (Tue 4:00 &amp; Wed 5:00)</b>
<i>HAIR</i>	Hair half up. See handout and example photo.
<i>HAIRPIECE</i>	Bow over elastic
<i>TIGHTS</i>	Pink
<i>SHOES</i>	Black tap shoes and pink ballet shoes



**HAIR HALF UP**

Front slicked and sprayed. Elastic band centered on crown of head. Back curled.

**Please ask us if you have any questions!!**

